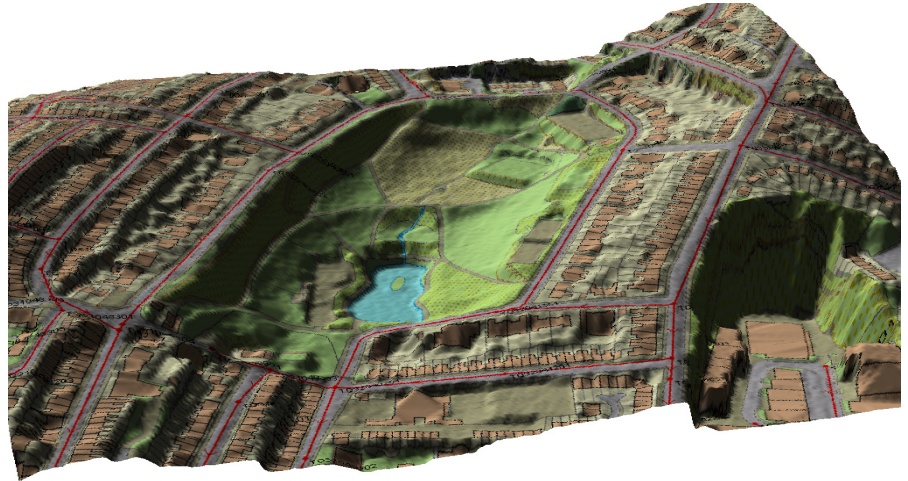


Project Data Sheet

PROJECT

Brighton Model Build

CLIENT

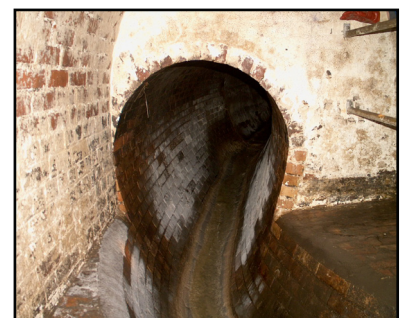


- Sewerage
- Rivers
- Coastal
- SUDS
- Land Drainage
- Hydraulic Modelling
- Flood Risk Assessments
- Drainage Area Planning
- Asset Management
- Flood Alleviation
- Flooding Investigations
- Feasibility Study
- Drainage Design
- Environmental Aspects
- Inundation Modelling
- Surface Water Management

We have undertaken a number of studies in the Brighton catchment which has a population of about 255,000. The sewerage network in Brighton is complex and in the late 1990's all the CSO's which previously spilled to sea were routed into a deep stormwater tunnel running along the beach at depths of up to 30 metres.

Previous studies have concentrated on the Trunk Sewer network and adequate modelling of the Stormwater Tunnel.

This latest study was to construct and verify a complete new model for the Brighton and Hove catchment including a series of towns and villages to the east. The model was built in Infoworks and replaced the existing model which was built in WASSP and WALLRUS format in the early / mid 1990's. A flow survey with over 123 flow monitors and 21 raingauges was undertaken together with an extensive programme of manhole and ancillary surveys. Much of the survey work and flow monitor installation and data retrieval needed to be done as night work because of the high flows in the Trunk Sewers and the busy streets during the daytime. An extensive LiDAR survey was undertaken of the catchment and surrounding areas (146 km²) in order that a high resolution Digital Terrain Model could be used to underlie the model.



Richard Allitt Associates Ltd
Suite 3, The Forge Offices,
Cuckfield Road,
Staplefield, Haywards Heath,
West Sussex, RH17 6ET

Tel: 01444 401840
Fax: 01444 401940

www.raaltd.co.uk